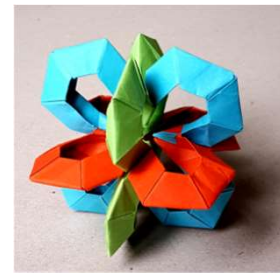




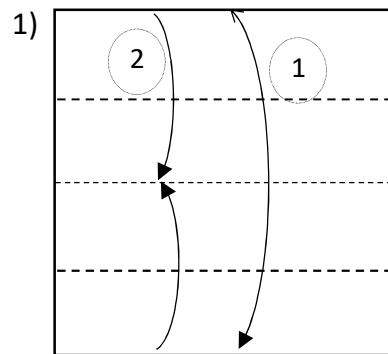
Folding 4 „negative Peaks“ together



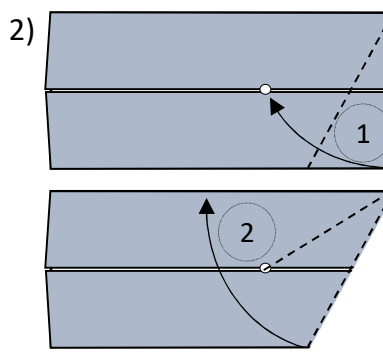
*

Background: For his wire frame models, Buriah Loper uses only connections with the ridge outside. This is an attempt to connect peaks with the ridge inside, to allow also “concave” connections. The image at top right shows a possible application: it has 8 such peaks in the inner (at the corners of an octahedron).

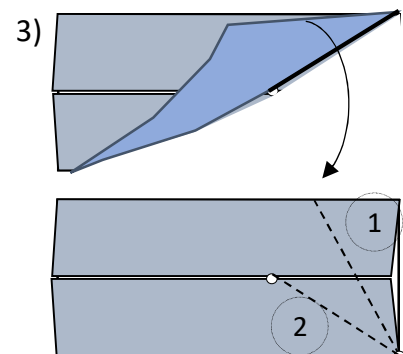
Paper ratio: depends on what you will do on the other end. Here, 1:1 is used.



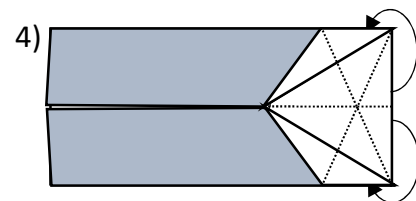
Inner side up.



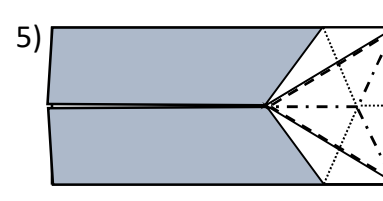
Make a 60°-fold, and another one, but fold just until centre line.



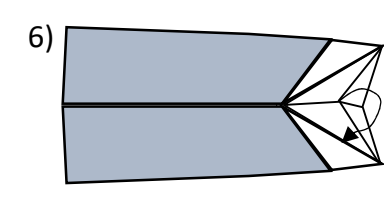
Open until step 2 and repeat on other side.



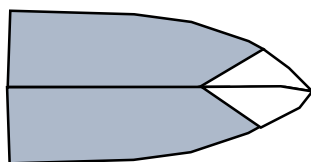
Fold front layers along existing creases backwards.



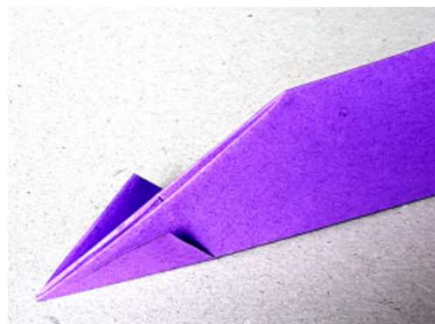
Mount- and valley fold back layer along existing creases as shown.



Now, bring the central peak under the pocket below. That will lock the model in the final shape.



Final view.



View from backside.

For connecting, put the right lash of the left part under the left lash of the right part, and the left lash of the right part over the right lash of the left part. You will probably need some glue.

* For the convex connections, Loper's 60°-connection (p.46) was used.